

SUBMITTAL DATA SHEET



CONDENSING HIGH EFFICIENCY UPFLOW SINGLE STAGE GAS FURNACES MODELS: FC9S

JOB NAME:		LOCATION:		
PURCHASER:		ORDER NO.:		
ENGINEER:				
SUBMITTED TO:	FOR:	REF:	APPROVAL:	CONSTRUCTION:
SUBMITTED BY:		DATE:		
UNIT DESIGNATION:		SCHEDULE NO.		MODEL NO.

PRODUCT DATA

Heating Performance

Input Capacity _____ MBH
 Output Capacity _____ MBH
 Air Temp. Rise _____ °F

Supply Air Blower Performance

Total Supply Air _____ CFM
 Total External Static Pressure _____ IWG
 Blower Speed (circle) _____ HI MH ML L
 Motor Rating _____ HP

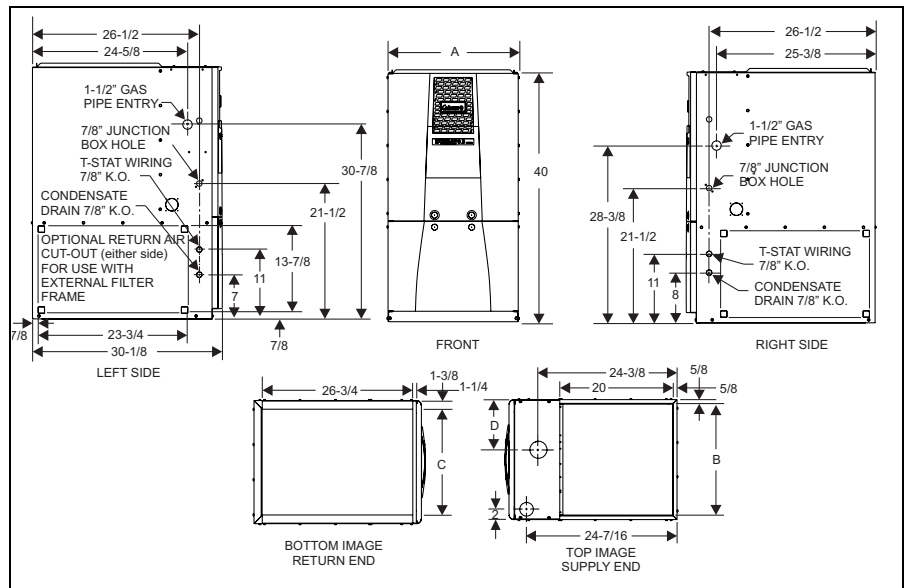
Electrical Data

Power Supply _____ / _____ / _____
 Total Unit Ampacity _____ AMPS
 Minimum Wire Size _____ AWG
 Maximum Overcurrent Device
 Fuses Circuit Breaker _____ AMPS

Unit Weight

Total Unit Weight _____ LBS

DIMENSIONS - INCHES



CLEARANCES

Top	1
Front	3
Vent Pipe	0
Rear	0
L & R Sides	0
Bottom	May be applied directly on a combustible floor

Models	Nominal CFM	Cabinet Size	Cabinet Dimension			
			A (in.)	B (in.)	C (in.)	D (in.)
FC9S040A12UP11	1200	A	14-1/2	13-1/4	12-1/8	6-1/4
FC9S060B12UP11	1200	B	17-1/2	16-1/4	15-1/8	8-1/2
FC9S080B12UP11	1200	B	17-1/2	16-1/4	15-1/8	8-1/2
FC9S080C16UP11	1600	C	21	19-3/4	18-1/2	8-7/8
FC9S080C20UP11	2000	C	21	19-3/4	18-1/2	8-7/8
FC9S100C16UP11	1600	C	21	19-3/4	18-1/2	8-7/8
FC9S100C20UP11	2000	C	21	19-3/4	18-1/2	8-7/8
FC9S120D20UP11	2000	D	24-1/2	23-1/4	21-7/8	10-5/8
FC9S135D20UP11	2000	D	24-1/2	23-1/4	21-7/8	10-5/8



ISO 9001
 Certified Quality
 Management System

FEATURES

- Compact, easy to install, ideal height 40" cabinet.
- May be installed as either two-pipe (sealed combustion) or single-pipe vent (using indoor combustion air)
- Blower-off delay for cooling SEER improvement.
- Easy to connect power/control wiring.
- Built-in, high level self diagnostics with fault code display.
- Low unit amp requirement for easy replacement application.
- Integrated control module for reliable, economical operation.
- Insulated blower compartment for quiet operation.
- Electronic Hot Surface Ignition saves fuel cost with increased dependability and reliability.
- Induced combustion system with inshot main burners for quiet, efficient operation.
- No special vent termination kit required.
- 100% shut off main gas valve for extra safety.
- PSC - four speed, direct drive motor with large, quiet blower.
- 24V, 40 VA control transformer and blower relay supplied for add-on cooling.
- Hi-tech tubular aluminized steel primary heat exchanger.
- Secondary (condensing) heat exchanger of 29-4C high-grade stainless steel.
- Timed on, adjustable off blower capability for maximum comfort.
- Internal vent coupling for maximum serviceability.
- Solid removable bottom panel allows easy application.
- High velocity filter and filter rack provided for field installation.
- Independent door removal for greater durability and ease of access.

FIELD INSTALLED ACCESSORIES

Propane Conversion Kit

- 1NP0347 - 40, 60, 80, 100, 120 MBH
- 1NP0349 - 135 MBH

External Side Filter Rack

- 1SF0101 - All sizes

External Bottom Filter Rack

- 1BR0314 - For "A" (14-1/2") cabinets
- 1BR0317 - For "B" (17-1/2") cabinets
- 1BR0321 - For "C" (21") cabinets
- 1BR0324 - For "D" (24-1/2") cabinets

Vent Termination

- 1CT0302 - (2") Concentric Vent Terminal
- 1CT0303 - (3") Concentric Vent Terminal
- 1HT0901 - Horizontal Sidewall Vent Termination Kit

Condensate Neutralizer Kit

- 1NK0301

High Altitude Pressure Switches

- 1PS0307 - 80, 100 MBH Units
- 1PS0309 - 60, 120 MBH Units
- 1PS0322 - 40, 135 MBH Units

INTAKE/VENT SIZING - TWO PIPE SYSTEM

MAXIMUM ELBOWS AND VENT LENGTHS										
Models Input BTUH	Pipe Size Inches	Maximum Number of Elbows*								Minimum Length
		1	2	3	4	5	6	7	8	
40,000	1-1/2	30	25	20	10	N/A	N/A	N/A	N/A	5
40,000	2	70	65	60	55	50	45	35	25	5
60,000	1-1/2	30	25	20	10	N/A	N/A	N/A	N/A	5
60,000	2	60	55	50	45	40	30	20	10	5
60,000	3	85	80	75	70	65	60	50	40	20
80,000	1-1/2	20	15	N/A	N/A	N/A	N/A	N/A	N/A	5
80,000	2	60	55	50	45	40	30	20	10	5
80,000	3	85	80	75	70	65	60	50	40	20
100,000	2	25	20	15	N/A	N/A	N/A	N/A	N/A	5
100,000	3	85	80	75	70	65	60	50	40	20
120,000	3	75	70	65	60	55	45	35	25	5
135,000	3	75	70	65	60	55	45	35	25	5

Three elbows (two in vent pipe and one in the air intake pipe) are already accounted for and need not be included in the elbow count from the Table above.

NOTES:
