

SUBMITTAL DATA SHEET



CONDENSING HIGH EFFICIENCY UPFLOW MODULATING GAS FURNACES MODELS: FC9M*UP

JOB NAME:		LOCATION:		
PURCHASER:		ORDER NO:		
ENGINEER:				
SUBMITTED TO:	FOR:	REF:	APPROVAL:	CONSTRUCTION:
SUBMITTED BY:		DATE:		
UNIT DESIGNATION:		SCHEDULE NO.	MODEL NO.	

PRODUCT DATA

Heating Performance

Input Capacity _____ MBH
 Output Capacity _____ MBH
 Air Temp. Rise _____ °F

Supply Air Blower Performance

Total Supply Air _____ CFM
 Total External Static Pressure _____ IWG
 Blower Speed (circle) _____ HI MH ML L
 Motor Rating _____ HP

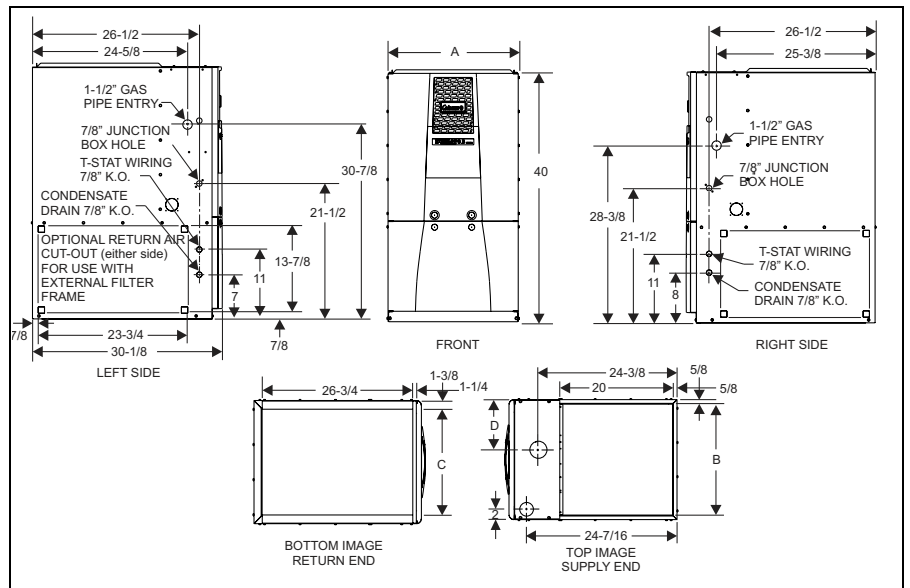
Electrical Data

Power Supply _____ / _____ / _____
 Total Unit Ampacity _____ AMPS
 Minimum Wire Size _____ AWG
 Maximum Overcurrent Device
 Fuses Circuit Breaker _____ AMPS

Unit Weight

Total Unit Weight _____ LBS

DIMENSIONS - INCHES



CLEARANCES

Top	1
Front	3
Vent Pipe	0
Rear	0
L & R Sides	0
Bottom	May be applied directly on a combustible floor

Models	Nominal CFM	Cabinet Size	Cabinet Dimension			
			A (in.)	B (in.)	C (in.)	D (in.)
FC9M060B12UP11	1200	B	17-1/2	16-1/4	15-1/8	8-1/2
FC9M080B12UP11	1200	B	17-1/2	16-1/4	15-1/8	8-1/2
FC9M080C16UP11	1600	C	21	19-3/4	18-1/2	8-7/8
FC9M100C16UP11	1600	C	21	19-3/4	18-1/2	8-7/8
FC9M100C20UP11	2000	C	21	19-3/4	18-1/2	8-7/8
FC9M120D20UP11	2000	D	24-1/2	23-1/4	21-7/8	10-5/8



ISO 9001
 Certified Quality
 Management System

FEATURES

- Compact, easy to install, ideal height 40" cabinet.
- May be installed as either two-pipe (direct vent) or single-pipe vent (using indoor combustion air)
- Blower-off delay for cooling SEER improvement.
- Easy to connect power/control wiring.
- Built-in, high level self diagnostics with fault code display.
- Low unit amp requirement for easy replacement application.
- Integrated control module for reliable, economical operation.
- Insulated blower compartment for quiet operation.
- Electronic Hot Surface Ignition saves fuel cost with increased dependability and reliability.
- Induced combustion system with inshot main burners for quiet, efficient operation.
- No special vent termination kit required.
- 100% shut off main gas valve for extra safety.
- PSC - four speed, direct drive motor with large, quiet blower.
- 24V, 40 VA control transformer and blower relay supplied for add-on cooling.
- Hi-tech tubular aluminized steel primary heat exchanger.
- Secondary (condensing) heat exchanger of 29-4C high-grade stainless steel.
- Internal vent coupling for maximum serviceability.
- Solid removable bottom panel allows easy application.
- Independent door removal for greater durability and ease of access.
- Modulating heating operation includes:
 - Modulating gas valve
 - Modulating inducer operation

FIELD INSTALLED ACCESSORIES

PROPANE (LP) CONVERSION KIT -

1NP0680 - All units

This accessory conversion kit must be used to convert natural gas (N) units for propane (LP) operation. Conversions must be made by qualified distributor or dealer personnel.

CONCENTRIC VENT TERMINATION -

1CT0302 (2")

1CT0303 (3")

For use through rooftop, sidewall. Allows combustion air to enter and exhaust to exit through single common hole.

CONDENSATE NEUTRALIZER KIT - 1NK0301

Neutralizer cartridge has a 1/2" plastic tube fittings for installation in the drain line. Calcium carbonate refill media is also available from the Source 1 Parts (p/n 026-30228-000).

SIDEWALL VENT TERMINATION - 1HT0901

For use on sidewall, two-pipe installations only. Provides a more attractive termination for locations where the terminal is visible on the side of the home.

EXTERNAL SIDE RETURN FILTER RACK -

1SF0101 - Fits all cabinet sizes

Attaches to side of furnace cabinet in side return applications. Holds any 16x25x1 permanent or disposable filter.

SIDE RETURN FILTER -

1SR0402 - All Models

1SR0200 - All Models

BOTTOM RETURN FILTER -

1BR0117 or 1BR0217 - For 17-1/2" cabinets

1BR0121 or 1BR0221 - For 21" cabinets

1BR0124 or 1BR0224 - For 24-1/2" cabinets

INTAKE/VENT SIZING - TWO PIPE SYSTEM

MAXIMUM ELBOWS AND VENT LENGTHS										
Models Input BTUH	Pipe Size Inches	Maximum Number of Elbows*								Minimum Length
		1	2	3	4	5	6	7	8	
60,000	2	60	55	50	45	40	30	20	10	5
60,000	3	85	80	75	70	65	60	50	40	5
80,000	2	60	55	50	45	40	30	20	10	5
80,000	3	85	80	75	70	65	60	50	40	5
100,000	2	25	20	15	N/A	N/A	N/A	N/A	N/A	5
100,000	3	85	80	75	70	65	60	50	40	5
120,000	3	75	70	65	60	55	45	35	25	5

Three elbows (two in vent pipe and one in the air intake pipe) are already accounted for and need not be included in the elbow count from the Table above.

NOTES:
