

SUBMITTAL DATA SHEET



**INDUCED DRAFT MID EFFICIENCY
UPFLOW/HORIZONTAL
TWO STAGE VARIABLE SPEED GAS FURNACES
MODELS: FC8V/LC8V**

JOB NAME:		LOCATION:	
PURCHASER:		ORDER NO.:	
ENGINEER:			
SUBMITTED TO:	FOR:	REF:	APPROVAL:
SUBMITTED BY:		DATE:	
UNIT DESIGNATION:	SCHEDULE NO.:	MODEL NO.:	

PRODUCT DATA

Heating Performance

Input Capacity _____ MBH
 Output Capacity _____ MBH
 Air Temp. Rise _____ °F

Supply Air Blower Performance

Total Supply Air _____ CFM
 Total External Static Pressure _____ IWG
 Blower Speed (circle) _____ HI MH ML L
 Motor Rating _____ HP

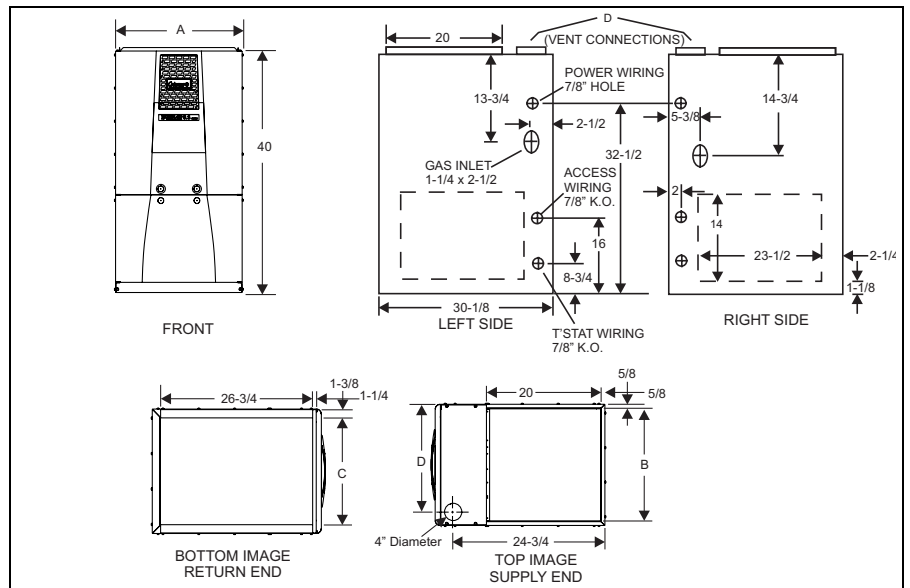
Electrical Data

Power Supply _____ / _____ / _____
 Total Unit Ampacity _____ AMPS
 Minimum Wire Size _____ AWG
 Maximum Overcurrent Device
 Fuses Circuit Breaker _____ AMPS

Unit Weight

Total Unit Weight _____ LBS

DIMENSIONS - INCHES



CABINET AND DUCT DIMENSIONS

MODEL	CFM	Cabinet Size	Cabinet Dimension			
			A	B	C	D
FC8V080A12UH11 LC8V080A12UH12	1200	A	14 1/2	13 1/4	10 1/8	10 1/8
FC8V100B16UH11 LC8V100B16UH12	1600	B	17 1/2	16 1/4	15 1/4	11 5/8
FC8V100C20UH11 LC8V100C20UH12	2000	C	21	19 3/4	16 5/8	13 3/8
FC8V120C20UH11 LC8V120C20UH12	2000	C	21	19 3/4	16 5/8	13 3/8

CLEARANCES

Top	1
Front	3
Vent Pipe	0
Rear	0
L & R Sides	0
Bottom	May be applied directly on a combustible floor



FEATURES

- Easily applied in upflow/horizontal left or right installation with no conversion necessary.
- Compact, easy to install, ideal height 40" cabinet.
- Blower-off delay for cooling SEER improvement.
- Easy to connect power/control wiring.
- Built-in, high level self diagnostics with fault code display.
- Low unit amp requirement for easy replacement application.
- Integrated control module for reliable, economical operation.
- Insulated blower compartment for quiet operation.
- Electronic Hot Surface Ignition saves fuel cost with increased dependability and reliability.
- 100% shut off main gas valve for extra safety.
- Variable Speed ECM with large, quiet blower.
- 24V, 40 VA control transformer and blower relay supplied for add-on cooling.
- Hi-tech tubular aluminized steel heat exchanger.
- Timed on, adjustable off blower capability for maximum comfort.
- Solid removable bottom panel allows easy application.
- Independent door removal for greater durability and ease of access.
- LoNOx models have been designed to meet specific code requirements.
- High velocity filter and filter rack provided for field installation.
- Independent door removal for greater durability and ease of access.
- Ecotrak Technology allows dealer to customize comfort settings based on regional location.

FIELD INSTALLED ACCESSORIES

PROPANE (LP) CONVERSION KIT -

1NP0480 - All units

This accessory conversion kit may be used to convert natural gas (N) units for propane (LP) operation. Conversions must be made by qualified distributor or dealer personnel.

EXTERNAL BOTTOM RETURN FILTER RACK W/FILTER -

Provides a cleanable, high velocity type filter and filter rack. Attaches to the bottom of the furnace.

1BR0314 - For 14-1/2" cabinets

1BR0317 - For 17-1/2" cabinets

1BR0321 - For 21" cabinets

1BR0324 - For 24-1/2" cabinets

HIGH ALTITUDE PRESSURE SWITCHES -

These accessory kits may be used to convert units for high altitude operation. Conversion must be made by qualified distributor or dealer personnel.

1PS0313	HIGH ALTITUDE PRESSURE SWITCH KIT (DOES NOT INCLUDE ORIFICES)	FOR APPLICATION INFORMATION SEE FORM 035-14461-000
1PS0314		

UNIT CLEARANCES TO COMBUSTIBLES

APPLICATION	TOP	FRONT	REAR	LEFT SIDE	RIGHT SIDE	FLUE	FLOOR/ BOTTOM	CLOSET	ALCOVE	ATTIC	LINE CONTACT
	In.	In.	In.	In. (cm)	In. (cm)	In. (cm)					
UPFLOW	1	6	0	0	3 ¹	6	COMBUSTIBLE	YES	YES	YES	NO
UPFLOW B-VENT	1	3	0	0	0	1	COMBUSTIBLE	YES	YES	YES	NO
HORIZONTAL	3 ²	6	0	1	0	6	COMBUSTIBLE	NO	YES	YES	YES ³
HORIZONTAL B-VENT	0	3	0	1	0	1	COMBUSTIBLE	NO	YES	YES	YES ³

1. 14-1/2" cabinet models only. All other units "0" clearance.

2. 14-1/2" cabinet left airflow applications only. All other units and right hand airflow applications "0" clearance.

3. Line contact only permitted between lines formed by the intersection of the rear panel and side panel (top in horizontal position) of the furnace jacket and building joists, studs or framing.

NOTES:
